

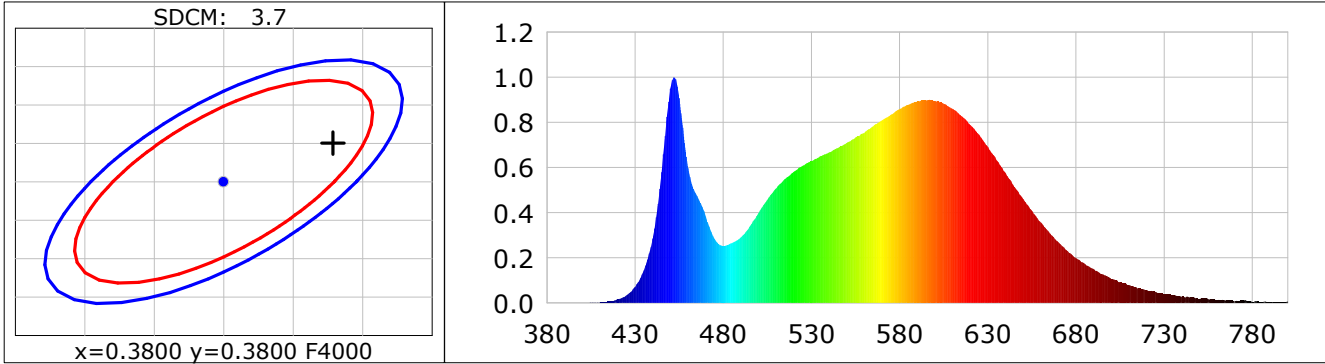
Lightsource Test Report

Product Infomation

Product Category: LED STRIP	Product Type: LED STRIP
Product Spec: VOLX 2	Product Number: 264
Manufacturer: TECSOLEED S.L.	Buyer: TECSOLEED S.L.

CIE Colorimetric Parameters

Chromaticity coordinates: $x=0.3879$ $y=0.3850$ $u(u')=0.2267$ $v=0.3375$ $v'=0.5063$
 CCT: $T_c=3867K$ ($duv=0.00172$) Color Ratio: $R=0.187$ $G=0.778$ $B=0.035$
 Peak Wavelength: 452.1nm Half Bandwidth: 19.5nm
 Dominant Wavelength: 578.7nm Color Purity: 0.320
 CRI: $R_a=82.8$, $avgR(1\sim14)=76.0$, $avgR(1\sim15)=75.9$ TM30: $R_f=83$, $R_g=95$
 GAI: $GAI_BB_8=89.6$, $GAI_BB_15=97.3$, $GAI_EES=68.6$
 R1 =81 R2 =89 R3 =95 R4 =81 R5 =81 R6 =86 R7 =85 R8 =63
 R9 =7 R10=75 R11=80 R12=59 R13=83 R14=98 R15=75
 Color Quality Scale: $Q_a=82.8$, $Q_f=83.1$, $Q_p=82.0$, $Q_g=91.7$
 Q1 =81 Q2 =98 Q3 =80 Q4 =76 Q5 =81 Q6 =83 Q7 =85 Q8 =89
 Q9 =98 Q10=90 Q11=86 Q12=85 Q13=84 Q14=73 Q15=76



Photometric Parameters

Luminous Flux: 1028.6 lm Efficiency: 122.95 lm/W Radiant Power: 3.066 W
 Total mains efficacy: 113.85 lm/W Energy Efficiency Class: E (EU 2019/2015)

Electric Parameters

Voltage: 12.000V Current: 0.6972A Power: 8.37W
 Power Factor: 1.0000 Frequency: 0.00Hz

Test Infomation

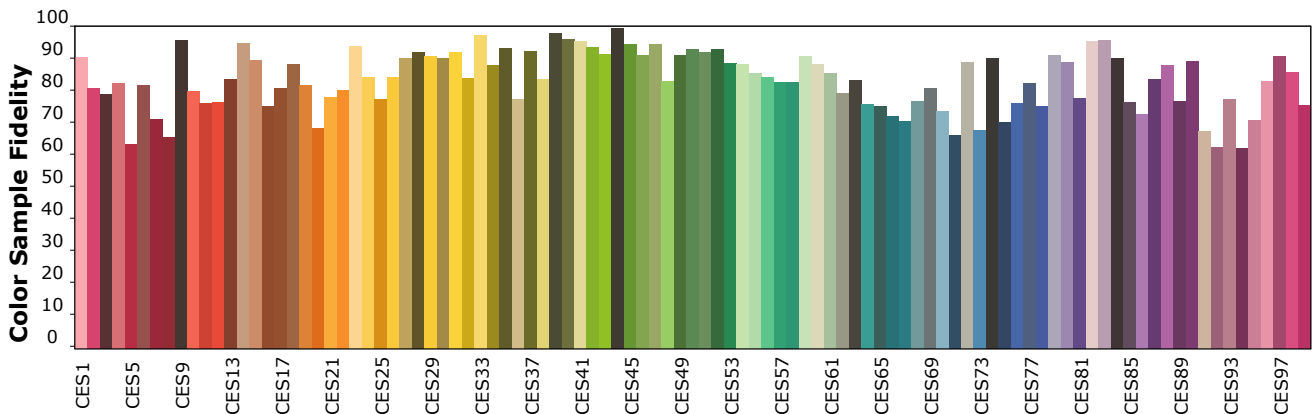
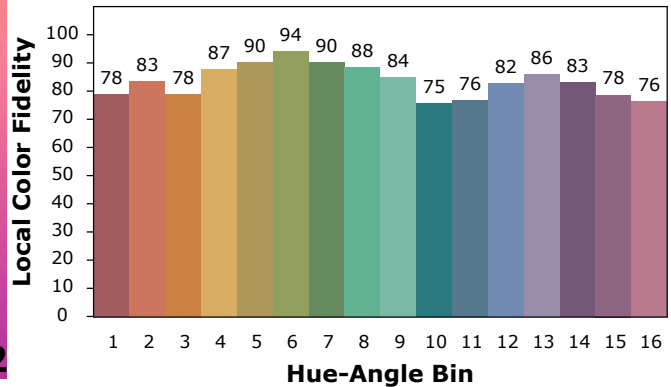
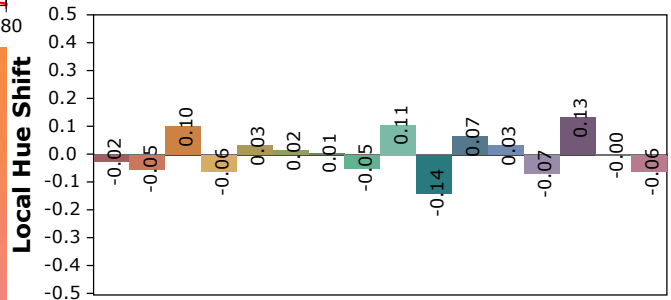
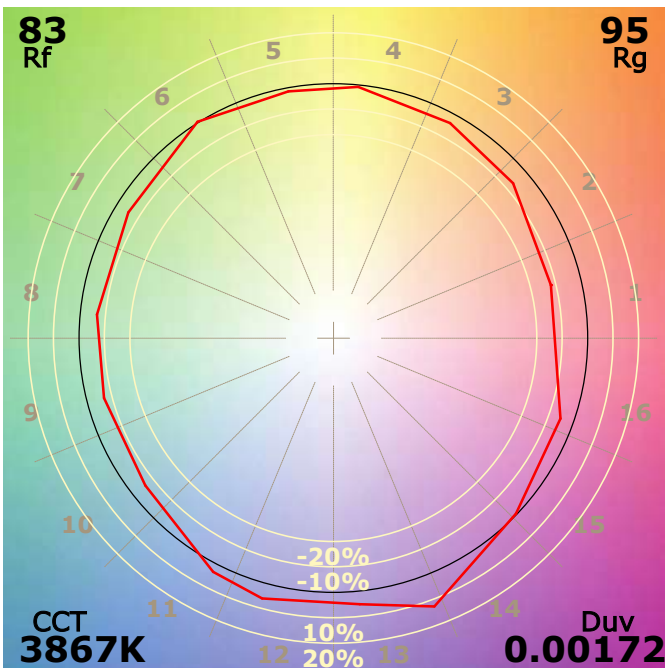
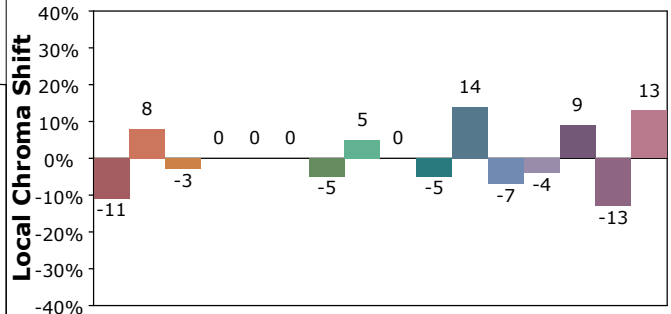
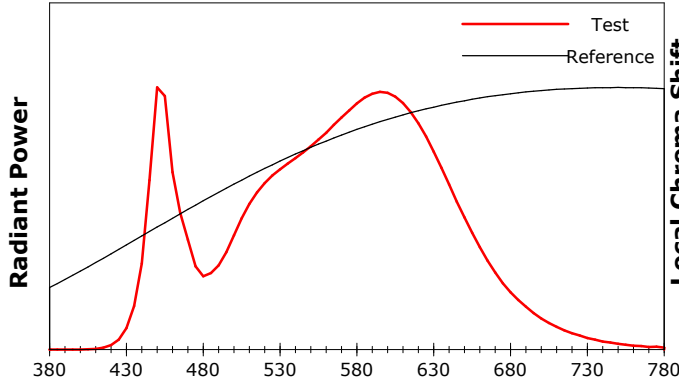
Scan Range: 380~800:1nm	Photometric Method: sphere-spectroradiometer
Stabilization Time: 20 Sec ALC.: 1.0000	Photometric Condition: Sphere diameter: 1.50m, 4PI
Max of Signal: 46243 (2154)	CCD Integration Time: 563.55 ms

IES TM-30-18 Color Rendition Report

Product Information

Product Category: LED STRIP
 Product Spec: 21059602440570
 Manufacturer: TECSOLELED S.L.

Product Type: LED STRIP
 Product Number: 264
 Buyer: TECSOLELED S.L.



Condition: Tx:18.6°C, Ti:18.4°C, R.H.:60%
 Test Lab: TECSOLELED S.L.
 Operator: JORDAN GIL DIAZ

Test Device: Inventfine CMS-2S (Plus)
 Test Time: 2021-10-29 10:08:26
 Inspector: